



BIRD•B•GONE[®]
Inc.

INSTALLATION INSTRUCTIONS

BIRD JOLT FLAT TRACK™

**CAUTION – READ BEFORE
STARTING INSTALLATION!**

**NEVER COME IN DIRECT CONTACT
WITH THE FLAT TRACK SYSTEM
WHILE IT IS TURNED ON!**

Bird-B-Gone's Bird Jolt Flat Track™ is a low profile electric track system that is easy to install with basic electrical knowledge. As with all products, if you have any questions, please call our bird control engineers at (800) 392-6915



PRIOR TO INSTALLATION:

- ◆ Calculate the width of area to be covered to determine the number of rows required.
- ◆ Determine the type of charger needed (Direct or Solar).
- ◆ Acquire the tools needed for installation:
 - Tape measure
 - Pencil or pen
 - Scissors
 - Utility knife
 - Voltage Tester
 - Crimping tool
 - Pliers
 - Wire cutter or stripping tool
 - Polyurethane construction glue
 - Caulking Gun

PLEASE NOTE THAT WHEN USING CLEAR TRACK™ OPT FOR THE HIGHEST QUALITY U.V. PROTECTED GLUE (ADBOND-CLR) SINCE THE CLEAR TRACK DOES NOT REFLECT SUNLIGHT AS WELL AS THE DARKER TRACK COLORS.

WARNING: Electric track systems should not be used if contact with flammable liquids, vapors or fumes is possible. Electric track systems should never be used in and around gas stations.



BIRD•B•GONE[®]
Inc.

(800) 392-6915

BIRD JOLT FLAT TRACK™

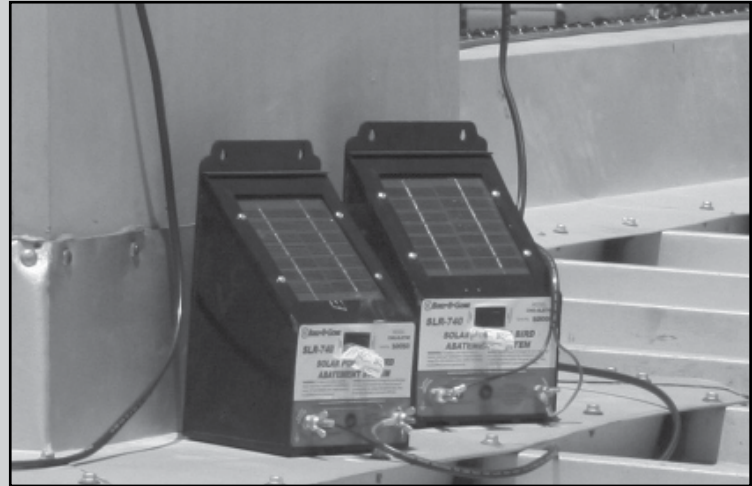
Bird-B-Gone utilizes several patented technologies to create the highest quality and safest electric track on the market. Our patented anti-arcing design, glue troughs and knitted mesh with tube-in-tube stocking design ensure our Bird Jolt Flat Track is the best electric track available.

STEP 1: SELECT A CHARGER



SOLAR CHARGER – CHG-SLR740

The Solar Charger covers up to 300 linear feet of track and lead wire. When using the solar charger, make sure there is southern exposure for maximum sun.



DIRECT CHARGER – CHG-AC750

The Direct Charger covers up to 500 linear feet of track and lead wire. Charger must be protected from the elements. If using in an exposed area, the charger must be placed in a Bird-B-Gone Waterproof Box [CHG-ACBOX].



*Be sure to install Bilingual Warning Labels (BJFTWRNBI-10) every 10 feet and near charging units.

WATER PROOF BOX - CHG-ACBOX



Waterproof box protects the direct charger from weather when installed outdoors.



BIRD•B•GONE®
Inc.

(800) 392-6915

BIRD JOLT FLAT TRACK™

STEP 2: PREPARE SURFACE FOR INSTALLATION



Remove all loose debris and bird droppings. Use protective gear when removing bird droppings and dispose of the droppings in a safe manner. The surface should be thoroughly cleaned and disinfected using a cleaner such as Bird-B-Gone's disinfectant (DIS-SQ8).

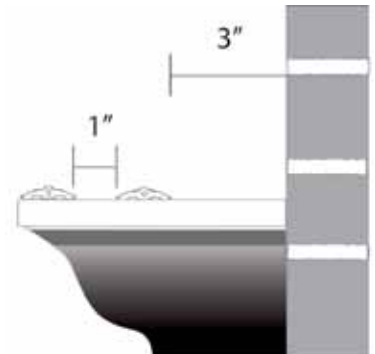
STEP 3: DETERMINE THE NUMBER OF ROWS NEEDED

There are two common types of installations for ledges and walls:

- ◆ Single sided refers to all ledges that have a back wall, back window or other feature that prevents birds from perching on both sides.
- ◆ Double sided means a parapet wall, sign, etc. that has two sides that birds use for perching.

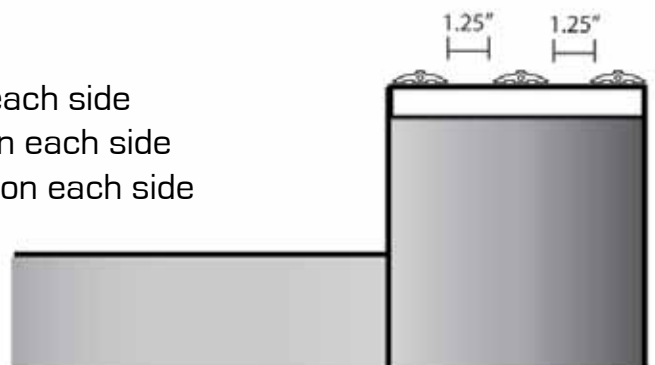
For single sided installations:

- 1" - 4" width – Use 1 row of Bird Jolt Flat Track
- 5" - 8" width – Use 2 rows of Bird Jolt Flat Track
- 9" - 12" width – Use 3 rows of Bird Jolt Flat Track



For doubled sided installations:

- 1" - 6" width – Use 1 row of Bird Jolt Flat Track on each side
- 7" - 15" width – Use 2 rows of Bird Jolt Flat Track on each side
- 16" - 28" width – Use 3 rows of Bird Jolt Flat Track on each side



BIRD•B•GONE®
Inc.

(800) 392-6915

BIRD JOLT FLAT TRACK™

STEP 4: ATTACHING ANTI-DAMMING RISERS

[For areas where water might dam behind the track]

*Step 4 can be skipped in places with good drainage or little to no rainfall.

After determining where the track will go and how many rows are needed, place the Anti-Damming Risers every 3 to 5 feet apart and glue or screw them down where the track will pass over them. Wait until the glue has cured before installing the track into the risers.



Anti-Damming Risers



Track and Anti-Damming Riser

STEP 5: INSTALLING THE TRACK

Bird Jolt Flat Track comes in 100 foot rolls that are mounted inside an easy dispense box. Open the box on the side and pull the track out as you go along.

Apply glue to the base of the track in a zigzag pattern, ensuring glue is in the glue troughs and along the flat base of the track. This will maximize the adhesion to the surface and provide the added benefits of thread insulation in the glue troughs. Press the track down firmly as you go along ensuring the glue spreads out and adheres tightly to the surface.

As the track approaches the anti-damming risers (if installed) leave a space of three inches before and after the track with no glue. Apply glue to the inside of the riser and press the track down into the riser to secure the bond.

Be sure to allow the glue to dry thoroughly during installation. Glue must be completely dried (cured) before the system can operate effectively.

BE SURE TO USE A POLYURETHANE GLUE TO SECURE FLAT TRACK TO THE SURFACE. SILICONE GLUES EXPAND AND CONTRACT IN THE HEAT, MAKING THEM A LESS DESIRABLE OPTION. YOU WILL NEED APPROXIMATELY ONE TUBE FOR EVERY 25 FEET OF TRACK.



BIRD•B•GONE®
Inc.

(800) 392-6915

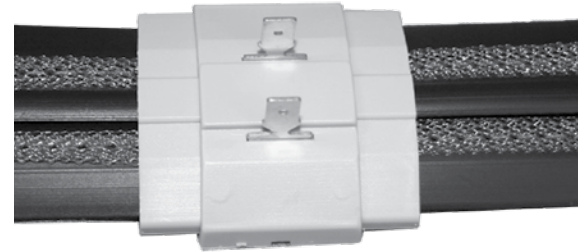
BIRD JOLT FLAT TRACK™

STEP 6: ADDING CONNECTORS

SNUG FIT CONNECTORS:

Often Snug Fit Connectors (BJFT-SFC-10) need to be attached to connect two pieces of Flat Track. Be sure to cut the end of the track as straight as possible for maximum effectiveness.

- ◆ Attach the Snug Fit Connector base to the end of the track, allowing the track to reach the center of the connector.
- ◆ Take the second piece of track, cut it straight and insert it from the other side of the connector so that the two pieces of track meet in the center of the Snug Fit Connector.
- ◆ Snap the top of the Snug Fit Connector in place (apply pressure to ensure full contact with pins and track) and apply a dollop of glue on the outside to seal.
- ◆ Be sure to glue the Snug Fit Connector down to the surface and then continue to glue down the track.

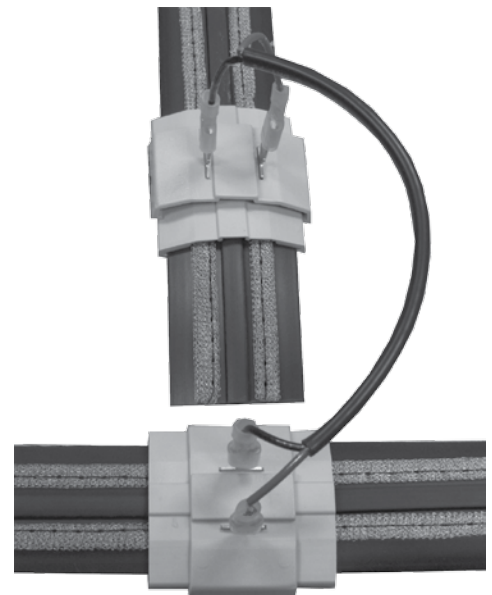


Snug-Fit Connector

T-CONNECTIONS:

Occasionally you will need to install the track in a “T-style” connection. It is best to use Snug Fit Connectors to create a simple connection.

- ◆ Insert a Snug Fit Connector on the track where you expect the “T” to terminate. As the track approaches the Snug Fit Connector to create the “T”, you will need another Snug Fit Connector at the end of the track.
- ◆ Cut a 3”- 4” section of track and attach it to one end of the Snug Fit Connector as described above.
- ◆ Attach this to the end of the track terminating in the “T.”
- ◆ Use lead-in wire (BJFT-LIW) to connect the two Snug Fit Connectors. This is done by stripping the ends of the lead in wire and attaching Blue Wire Connectors (BJFT-BCN100) to each of the four ends of the wire.
- ◆ Push each connector over the tabs on the Snug Fit Connector and crimp to secure.



Snug-Fit Connector T-Connection



BIRD•B•GONE®
Inc.

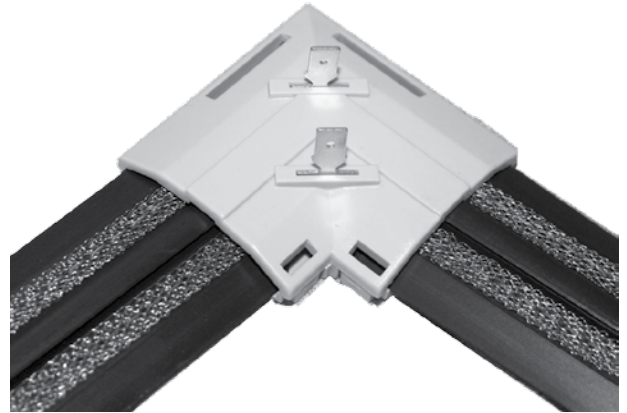
(800) 392-6915

BIRD JOLT FLAT TRACK™

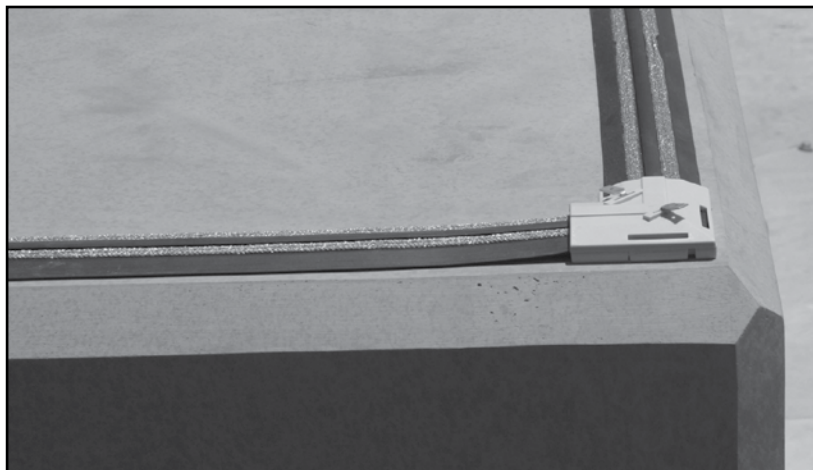
SNUG FIT CORNER CONNECTORS:

If you determine you need to make a 90° angle with the track, the best solution is to install a Snug Fit Corner Connector (BJFT-SFCC).

- ◆ At the end of the track, cut the track at a 45° angle with the shortest side facing the direction you plan to turn.
- ◆ Place the track in the base of the Snug Fit Corner Connector.
- ◆ Using a new piece of track that will be continuing in the new direction, cut the track at a 45° angle with the shortest side facing the direction the track is coming from.
- ◆ Place the track in the base of the Snug Fit Corner Connector so that the tracks are touching and pressed against each other.
- ◆ Snap the top of the Snug Fit Corner Connector in place (apply pressure to ensure full contact with pins and track) and apply a dollop of glue on the outside to seal.
- ◆ Be sure to glue the Snug Fit Corner Connector down to the surface and then continue to glue down the track.



Corner Connector



BIRD JOLT FLAT TRACK™

STEP 7: ATTACHING THE FLAT TRACK TO THE CHARGER

The most common and safest way to connect the Bird Jolt Flat Track to the charger is to use a Snug Fit Connector to create a connection.

- ◆ Attach Connector Loops (STPWC-10) to one end of the lead wire, while connecting Blue Wire Connectors to the other end of the lead wire.
- ◆ Cut a 3"- 4" section of track and attach into one end of a Snug Fit Connector. Attach this connector to the end of the track that will be connected to the charger.
- ◆ Place the Blue Wire Connectors over the tabs on the Snug Fit Connector and crimp to secure.
- ◆ Test the charging unit using the Voltage Tester (BJFT-VLT) to make sure it is working properly. Optimally the charger should max out at: Solar Charger - 7.0 KV Electric Charger - 750 V.
- ◆ Once you have determined the charger is working, attach Connector Loops to the charger's knobs and use wingnuts (included) to secure the loops.
- ◆ Test the track using the voltage tester several times at different locations on the track, especially after every connection, to ensure the unit is functioning properly.



Do not use more than one charger (Solar or Direct) on the same run of the Flat Track.

BIRD JOLT FLAT TRACK™

WARNING – TO ENSURE SYSTEM SAFETY AND INTEGRITY

Mount Bilingual Warning Labels in areas where they are clearly visible to anyone who may come in contact with the Bird Jolt Flat Track System.

DO NOT INSTALL BIRD JOLT FLAT TRACK WHERE IT MAY COME INTO CONTACT WITH PEOPLE. USE WARNING LABELS WHERE POSSIBLE.



Be sure to provide your customer (plant manager, building maintenance personnel, general management, etc.) with detailed Flat Track operation instructions including:

- ◆ Drawings and documentation on location and position of Flat Track system.
- ◆ System operation details, including how to disconnect and reconnect if necessary.
- ◆ Safety information and troubleshooting.

Do not turn off the system once installed, as that will facilitate birds landing on the track again. Bird droppings could short circuit the system and cause arcing when the power is reconnected.