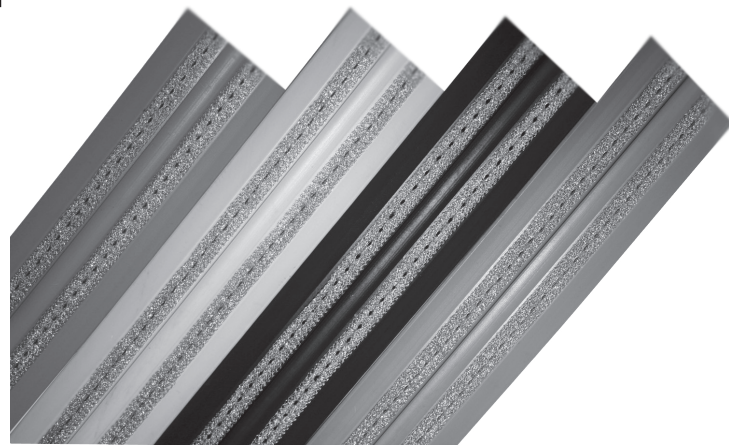


# Installation Instructions

## Bird Jolt Flat Track™

Thank you for purchasing the Bird•B•Gone® Bird Jolt Flat Track™. For best results please *read these instructions before use* and retain them for future reference.

Bird•B•Gone's Bird Jolt Flat Track® is a low profile electric track system that is easy to install with basic electrical knowledge. As with all products, if you have any questions, please call our bird control engineers at (800) 392-6915.



### Tools Needed For Installation:

- Tape measure
- Pencil or pen
- Scissors
- Utility knife
- Voltage tester
- Crimping tool
- Pliers
- Wire cutter or stripping tool
- Polyurethane construction glue
- Caulking gun

### Prior To Installation:

- Calculate the width of the area to be covered in order to determine the number of rows required.
- Determine the type of charger that will be needed (Direct or Solar).
- Thoroughly clean the Bird Jolt Flat Track® installation area.



Please note that clear track does not reflect sunlight as effectively as the darker collors. If clear track is used, opt for the highest quality U.V. protected glue to ensure adhesion (ASI 57).



**WARNING:** Electric track systems should **NOT** be used if contact with flammable liquids, vapors or fumes is possible. Electric track systems should **NEVER** be used in and around gas stations.

### QUESTIONS?

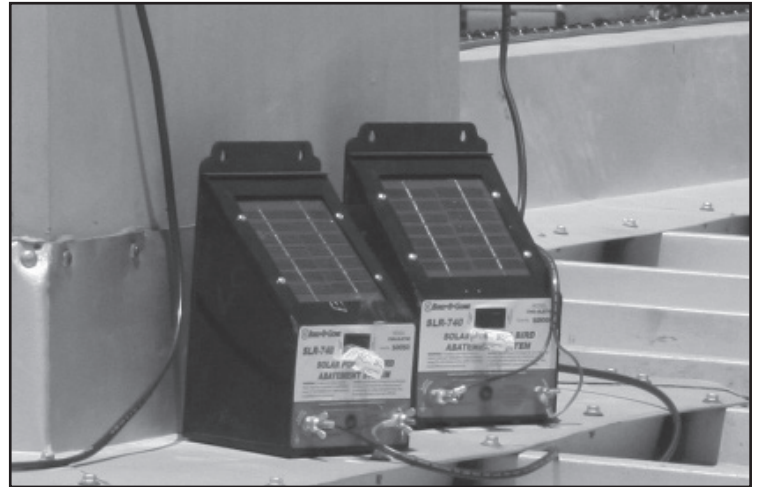
Call Bird•B•Gone® at 949.472.3122 or 800.392.6915  
Email: [nobirds@birdbgone.com](mailto:nobirds@birdbgone.com)



[BIRDBGONE.COM](http://BIRDBGONE.COM) | 800.392.6915

# Installation Instructions

Bird•B•Gone® utilizes multiple patented technologies to create the highest quality and safest electric track on the market. Our patented anti-arcing design, glue troughs and knitted mesh with tube-in-tube stocking design ensures our Bird Jolt Flat Track® is the best electric track available.



## STEP 1: Select a charger



### Solar Charger - CHG-SLR740

The Solar Charger covers up to 300 linear feet of track and lead wire. When using the solar charger, make sure there is south facing exposure for maximum sun. Extra batteries are available.



### Direct Charger - CHG-AC750

The Direct Charger covers up to 500 linear feet of track and lead wire. Charger **must** be protected from the elements. If using in exposed area, the charger must be placed in a Bird B Gone Waterproof Box (CHG-ACBOX).



Be sure to install Bilingual Warning Labels (BJFTWRNBI-10) every 10 feet and near charging units.



### Waterproof Box - CHG-ACBOX

The Waterproof Box protects the direct charger from weather when installed outdoors.

## QUESTIONS?

Call Bird•B•Gone® at 949.472.3122 or 800.392.6915  
Email: nobirds@birdbgone.com

 **BIRD•B•GONE®**  
BIRDBGONE.COM | 800.392.6915

# Installation Instructions

## STEP 2: Prepare surface for installation



Remove all loose debris and bird droppings. Use protective gear when removing bird droppings and dispose of the droppings in a safe manner. The surface should be thoroughly cleaned and disinfected using a cleaner such as Bird•B•Gone's disinfectant (DIS-SQ8).

## STEP 3: Determine the number of rows needed

There are two common types of installations for ledges and walls:

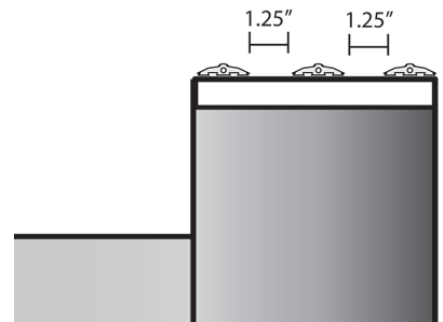
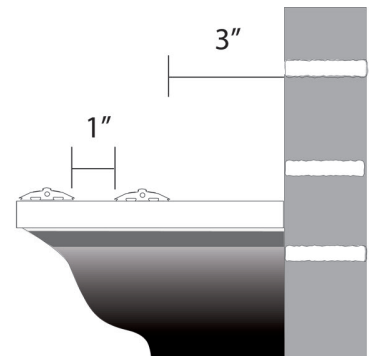
- Single sided refers to all ledges that have a back wall, back window or other feature that prevents birds from perching on both sides.
- Double sided means a parapet wall, sign, etc. that has two sides that birds use for perching.

For single sided installations:

- 1"- 4" width – Use 1 row of Bird Jolt Flat Track®
- 5"- 8" width – Use 2 rows of Bird Jolt Flat Track®
- 9"- 12" width – Use 3 rows of Bird Jolt Flat Track®

For doubled sided installations:

- 1"- 9" width – Use 1 row of Bird Jolt Flat Track® on each side
- 10"- 21" width – Use 2 rows of Bird Jolt Flat Track® on each side
- 22"+ width – Use 3 rows of Bird Jolt Flat Track® on each side



## QUESTIONS?

Call Bird•B•Gone® at 949.472.3122 or 800.392.6915

Email: [nobirds@birdbgone.com](mailto:nobirds@birdbgone.com)



BIRDBGONE.COM | 800.392.6915

# Installation Instructions

## STEP 4: Attaching Anti-Damming Risers

Anti-Damming Risers should be used for areas where water might dam behind the track.

After determining where the track will go and how many rows are needed, place the Anti-Damming Risers every 3 to 5 feet apart and glue or screw them down where the track will pass over them. Wait until the glue has cured before installing the track into the risers.

Step 4 can be skipped in areas with little to no rainfall or adequate drainage.



Anti-Damming Risers



Track and Anti-Damming Riser

## STEP 5: Installing the track

Bird Jolt Flat Track® comes in 100 foot rolls that are mounted inside an easy dispense box. Open the box on the side and pull the track out as you go along.

Apply glue to the base of the track or along leading edge in a zigzag pattern, ensuring glue is in the glue troughs and along the flat base of the track. This will maximize the adhesion to the surface and provide the added benefits of thread insulation in the glue troughs. Press the track down firmly as you go along ensuring the glue spreads out and adheres tightly to the surface.

As the track approaches the anti-damming risers (if installed) leave a space of **three inches** before and after the track with no glue. Apply glue to the inside of the riser and press the track down into the riser to secure the bond.



Be sure to allow the glue to dry thoroughly during installation. Glue must be completely dried (cured) before the system can operate effectively.

### QUESTIONS?

Call Bird•B•Gone® at 949.472.3122 or 800.392.6915

Email: [nobirds@birdbgone.com](mailto:nobirds@birdbgone.com)



BIRDBGONE.COM | 800.392.6915

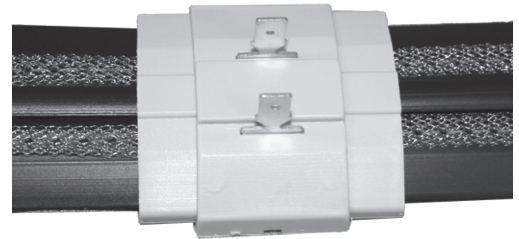
# Installation Instructions

## STEP 6: Adding connectors

### Snug Fit Connectors:

Often Snug Fit Connectors (BJFT-SFC-10) need to be attached to connect two pieces of flat track. Be sure to cut the end of the track as straight as possible for maximum effectiveness.

- Attach the Snug Fit Connector base to the end of the track, allowing the track to reach the center of the connector.
- Take the second piece of track, cut it straight and insert it from the other side of the connector so that the two pieces of track meet in the center of the Snug Fit Connector.
- Snap the top of the Snug Fit Connector in place (apply pressure to ensure full contact with pins and track) and apply a dollop of glue on the outside to seal.
- Be sure to glue the Snug Fit Connector down to the surface and then continue to glue down the track.



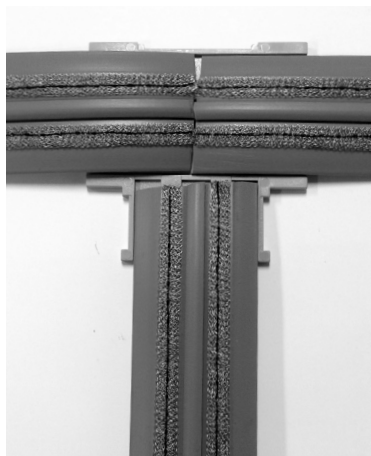
Snug-Fit Connector

### T - Connectors:

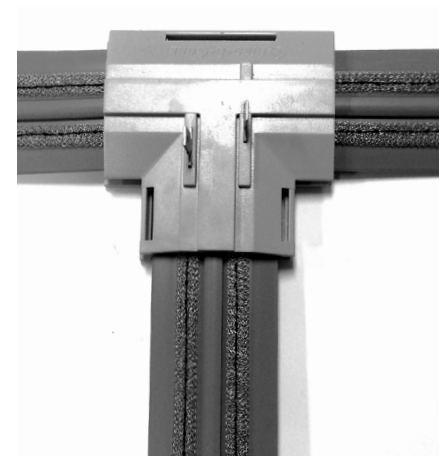
Occasionally you will need to install the track by using a T-Connector (BJFT-TC10). This connector acts as an effective three way connection between your track, allowing for installation in multiple directions routed to a single charger.

- Align the main track section perpendicular to the other connecting section of track.
- Link together the intersecting pieces of track by attaching the T-connector to the main track with the open end connecting the perpendicular section.
- Snap the top of the T - Connector in place (apply pressure to ensure full contact with pins and track) and apply a dollop of glue on the outside to seal.
- Glue the T-Connector to the surface along with surrounding track.

Before  
T - Connector



After  
T - Connector



### QUESTIONS?

Call Bird•B•Gone® at 949.472.3122 or 800.392.6915  
Email: nobirds@birdbgone.com



BIRDBGONE.COM | 800.392.6915

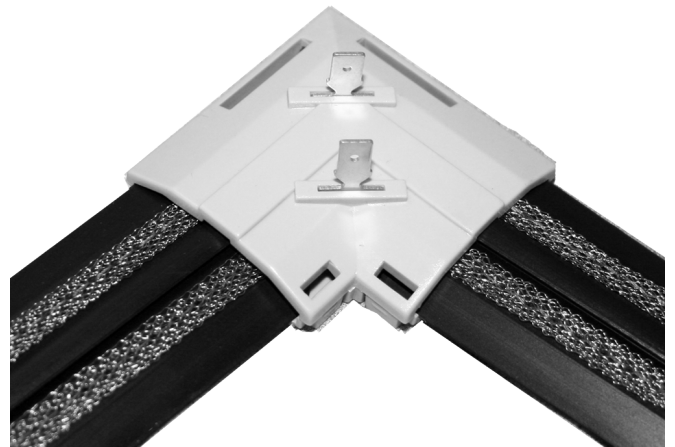


# Installation Instructions

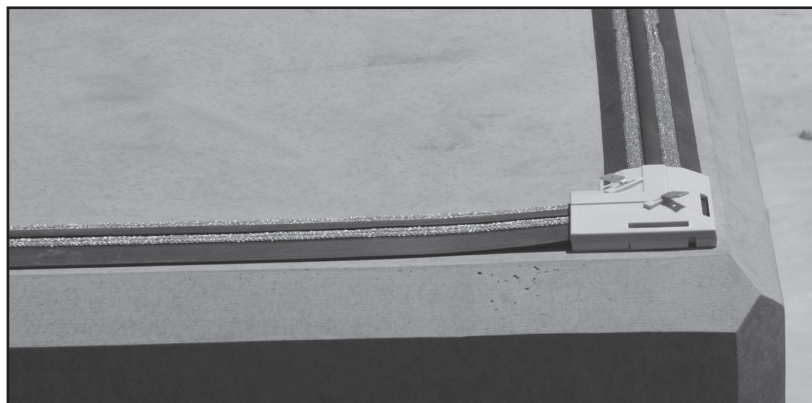
## Snug Fit Corner Connectors:

If you determine you need to make a 90° angle with the track, the best solution is to install a Snug Fit Corner Connector (BJFT-SFCC). Before corner, leave roughly 6 inches of track unglued. This will allow for a clean install of the corner connectors and prevent your hands from coming in contact with glue.

- At the end of the track, cut the track at a 45° angle with the shortest side facing the direction you plan to turn.
- Place the track in the base of the Snug Fit Corner Connector.
- Using a new piece of track that will be continuing in the new direction, cut the track at a 45° angle with the shortest side facing the direction the track is coming from.
- Place the track in the base of the Snug Fit Corner Connector so that the tracks are touching and pressed against each other.
- Snap the top of the Snug Fit Corner Connector in place (apply pressure to ensure full contact with pins and track) and apply a dollop of glue on the outside to seal.
- Be sure to glue the Snug Fit Corner Connector down to the surface and then continue to glue down the track.



Snug Fit Corner  
Connector



## QUESTIONS?

Call Bird•B•Gone® at 949.472.3122 or 800.392.6915

Email: [nobirds@birdbgone.com](mailto:nobirds@birdbgone.com)



BIRDBGONE.COM | 800.392.6915

# Installation Instructions

## STEP 7: Attaching the flat track to the charger

The most common and safest way to connect the Bird Jolt Flat Track® to the charger is to use a Snug Fit Connector to create a connection.

- Attach Connector Loops (STPWC-10) to one end of the lead wire, while connecting Blue Wire Connectors to the other end of the lead wire.
- Place the Blue Wire Connectors (BJFT-BCN100) over the tabs on the Snug Fit Connector and crimp both ends to secure.
- Test the charging unit using the Voltage Tester (BJFT-VLT) to make sure it is working properly. Optimally the charger should max out at: Solar Charger +/- 8.0 KV ; Direct Charger +/- 10.0 KV.
- Once you have determined the charger is working properly, attach Connector Loops to the charger's terminals and use wingnuts (included) to secure the loops.
- Test the track using the Voltage Tester several times at different locations on the track, especially after every connection, to ensure the unit is functioning properly.



 Do not use more than one charger (Solar or Direct) on the same run of the Flat Track.

### QUESTIONS?

Call Bird•B•Gone® at 949.472.3122 or 800.392.6915

Email: [nobirds@birdbgone.com](mailto:nobirds@birdbgone.com)



BIRDBGONE.COM | 800.392.6915

# Installation Instructions

## STEP 8: Installation of warning labels

### WARNING - To Ensure System Safety and Integrity

Mount Bilingual Warning Labels in area where they are clearly visible to anyone who may come in contact with the Bird Jolt Flat Track® system.



**Do not install Bird Jolt Flat Track® where it may come into contact with people. Use warning labels where possible.**



Be sure to provide your customer (plant manager, building maintenance personnel, general management, etc.) with detailed Bird Jolt Flat Track® operation instructions including:

- Drawings and documentation on location and position of Bird Jolt Flat Track system
- System operation details, including how to disconnect and reconnect if necessary
- Safety information and troubleshooting

Visit our website for installation videos or call us for help at 800.392.6915.



**Do not turn off the system once installed, as that will facilitate birds landing on the track again. Bird droppings could short circuit the system and cause arcing when the power is reconnected.**

## QUESTIONS?

Call Bird•B•Gone® at 949.472.3122 or 800.392.6915

Email: [nobirds@birdbgone.com](mailto:nobirds@birdbgone.com)



[BIRDBGONE.COM](http://BIRDBGONE.COM) | 800.392.6915