



# Transparent Bird Gel

## Bird Gel Repellent

### INSTALLATION INSTRUCTIONS

Thank you for purchasing the Bird•B•Gone® Transparent Bird Gel. For best results please read these instructions before use and retain them for future reference.

Bird•B•Gone® Transparent Bird Gel is an effective solution to deter pigeons and starlings from roosting or perching on various flat horizontal surfaces such as ledges, roofs, and sills. Designed for use in municipal, industrial, commercial, and residential settings, this sticky gel creates an uncomfortable sensation on the feet of pest birds prompting them to leave the area.

<b>BIRD SPECIES</b>	Repels pigeons and starlings
<b>BIRD PRESSURE</b>	Light to medium
<b>WHERE TO USE</b>	Use for perching, roosting, sitting birds on ledges, parapet walls, windowsills, pipes, i-beams, conduits, and flat horizontal surfaces. Not recommended for nesting birds.
<b>MATERIALS</b>	Active ingredients: Polybutene 93%; Inert 7%
<b>PACKAGING</b>	Available in 10 oz. caulk tube. Case includes 12 tubes.
<b>COVERAGE</b>	One tube covers 10 feet (3 in zig zag pattern). Remains effective for up to 6 months.

## INSTALLATION APPLICATION DIRECTIONS

### I. SURFACE PREPARATION

1. Always wear personal protective equipment (PPE) such as waterproof gloves and eye protection.
2. Wipe or scrape all dust, dirt, droppings, and other loose debris from surfaces.
3. Clean and disinfect the surface with hospital grade disinfectant. Allow surface to fully dry.
4. Seal porous surfaces prior to treatment by brushing on one coat of shellac or a 50% solution of white glue and allow to dry.

### INSTALLATION QUESTIONS?

Call Bird•B•Gone® at 949.472.3122 or 800.392.6915  
Email: [nobirds@birdbgone.com](mailto:nobirds@birdbgone.com)



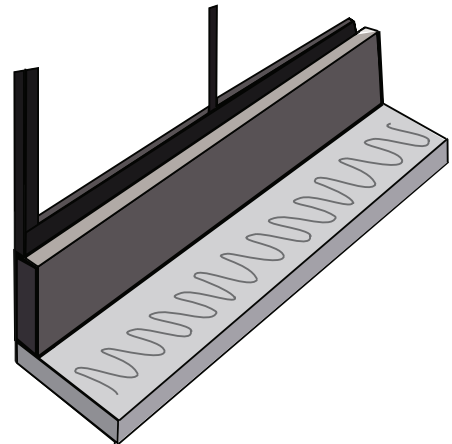
# Transparent Bird Gel

Bird Gel Repellent

## INSTALLATION INSTRUCTIONS

### II. PRODUCT APPLICATION

1. Use a caulking gun and/or a putty knife to apply this product.
2. Remove cap then carefully cut off the tip of plastic nozzle on top of tube.
3. Insert a screwdriver or extension rod on the caulking gun to puncture seal.
4. Press nozzle tip against surface to ensure good adhesion.
5. To treat ledges or sills, apply beads of repellent no larger than 1/2" wide by 1/2" deep at the deepest part in strips no closer than 2" apart, beginning 1" in from the outer edge.
6. Apply in 3" zig-zag pattern leaving periodic spacing for water drainage.
7. To treat roofs, peaks, cornices, etc., apply a single bead of repellent along the highest point.
8. A second treatment may be necessary if product becomes attended by heavy bird traffic.
9. One 10 oz., tube of this product will treat 10 linear feet when product is applied in beads 1/2" wide and 1/2" high.



*DO NOT APPLY IN BEADS WIDER OR DEEPER THAN THAT PRESCRIBED ABOVE.*

*DO NOT APPLY ON LOCATIONS WHERE DESIRABLE SPECIES OF BIRDS MIGHT BECOME ENTANGLED IN THE REPELLENT.*

*DO NOT APPLY IN AREAS BIRDS ARE NESTING.*

*DO NOT APPLY ON VERTICAL SURFACES.*

### III. PRODUCT CLEAN-UP

Use mineral spirits to remove product from treated surfaces, equipment, or other contaminated articles.

### INSTALLATION QUESTIONS?

Call Bird•B•Gone® at 949.472.3122 or 800.392.6915

Email: nobirds@birdbgone.com

